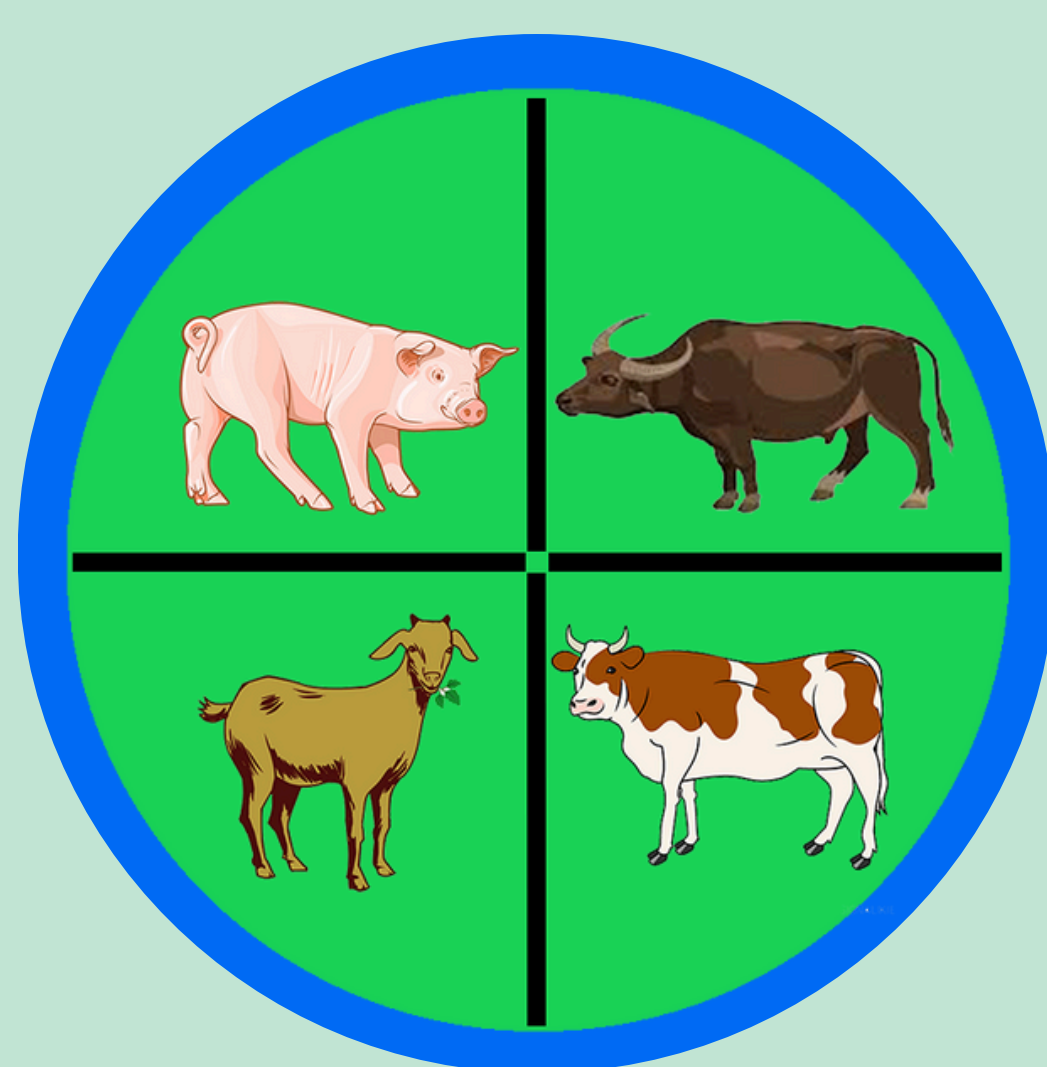


2023 LIVESTOCK AND POULTRY PRODUCTION (in Metric Ton)

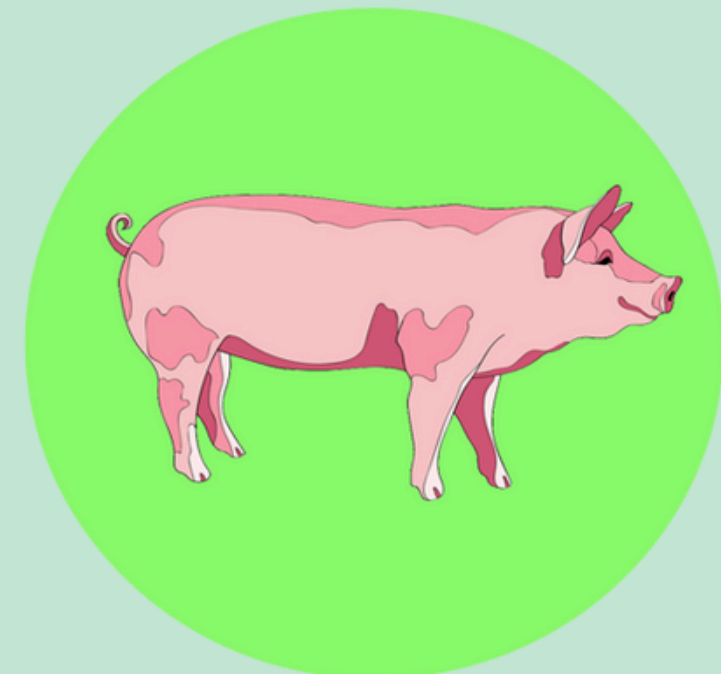
LIVESTOCK

TOTAL PRODUCTION

2023 57,835
2022 55,429



HOG



35,442

61.28%
Contribution to Total Production

BATANES

474
97

CARABAO



8,113

14.03%

Contribution to Total Production

GOAT



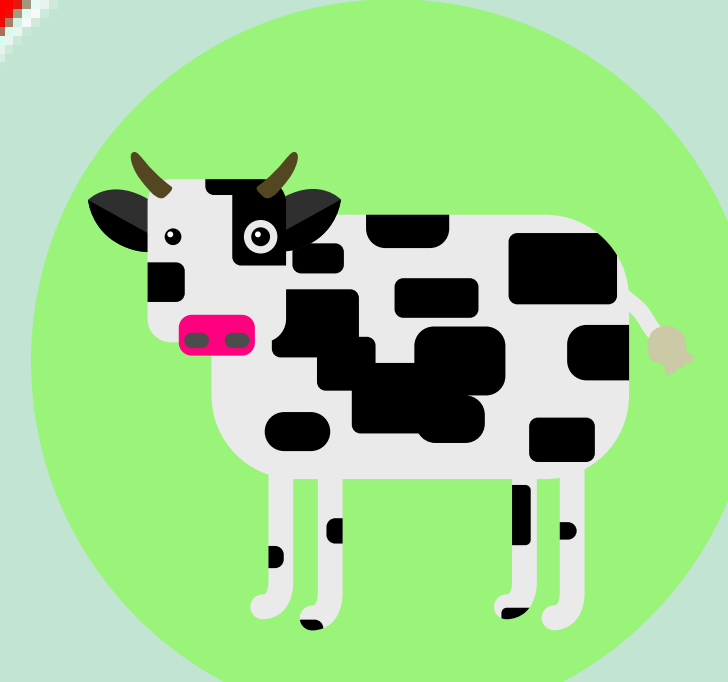
1,385

2.40%
Contribution to Total Production

CAGAYAN

24,952
12,768

CATTLE



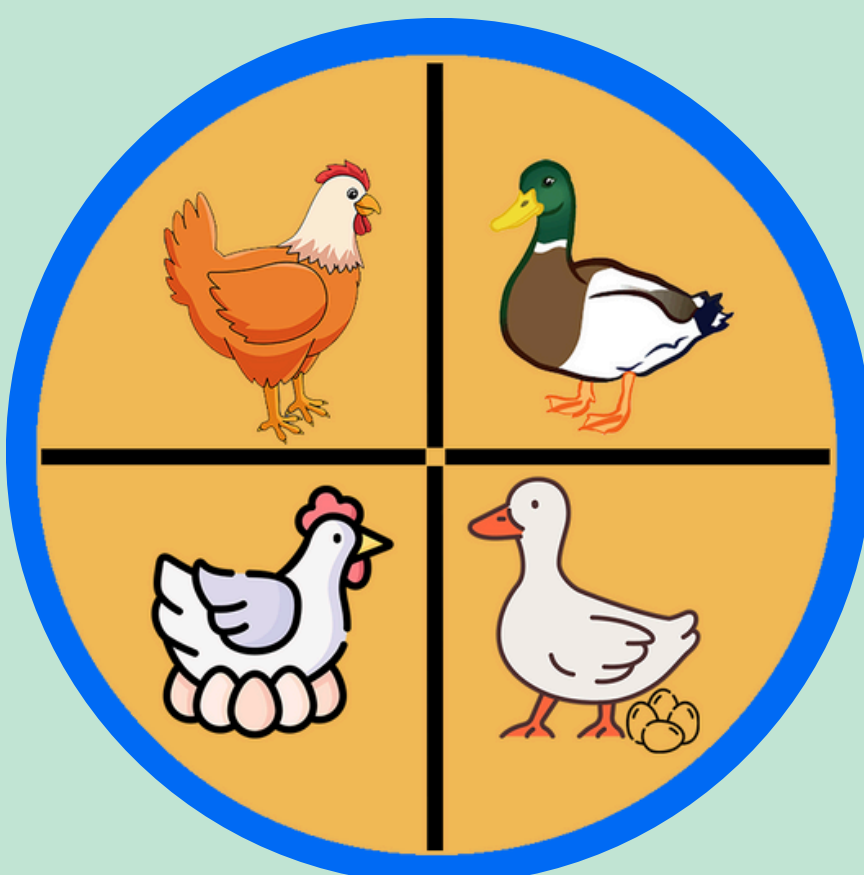
12,894

22.29%
Contribution to Total Production

POULTRY

TOTAL PRODUCTION

2023 70,981
2022 71,462



DUCK



2,579

3.63%
Contribution to Total Production

ISABELA

19,607
47,431

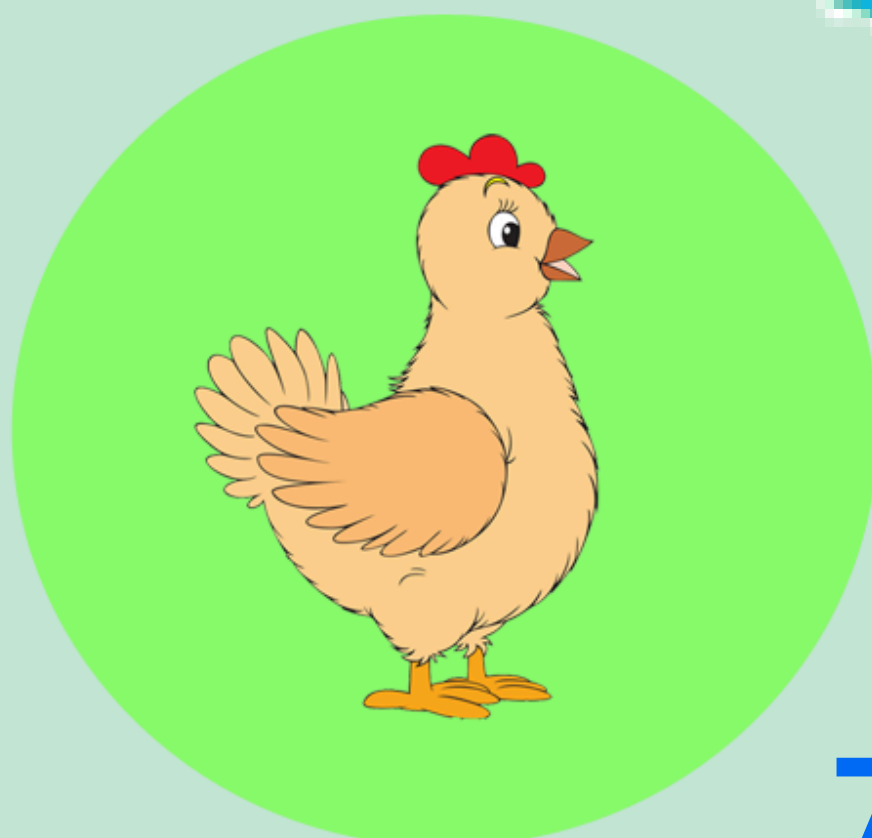
NUEVA VIZCAYA

9,574
5,856

QUIRINO

3,228
4,828

CHICKEN



51,744

72.90%
Contribution to Total Production

DUCK EGG



1,817

2.56%
Contribution to Total Production

CHICKEN EGG



14,840

20.91%
Contribution to Total Production