

# LIVESTOCK AND POULTRY INVENTORY

## OCTOBER - DECEMBER 2024

Reference No: 2025-01-011

### INVENTORY AS OF JANUARY 01, 2025 (IN HEAD/BIRD)

2023

VS

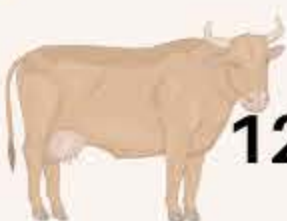
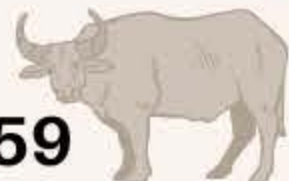
2024



21,260



21,159



12,204



11,735



12,754



26,514



13,498



13,501



27,238



85,791



168,341



195,328



511,879



460,455



105,315



103,284



2,510



2,822

