



INLAND MUNICIPAL FISHERIES SITUATION REPORT in ISABELA

January to March 2025^P

Reference No: IG-2025-31129



INLAND MUNICIPAL FISHERIES PRODUCTION

609.78 **Metric Tons**

PERCENT SHARE in
1st QUARTER 2025^P

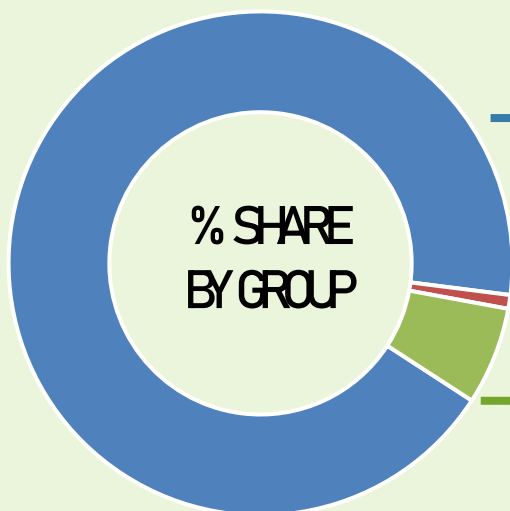
27.96%

TOTAL FISHERIES PRODUCTION



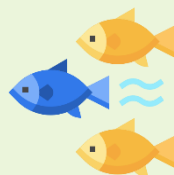
GROWTH RATE
(2024/2023)

232%



89.73%

FISH



8.31%

MOLLUSCS



1.96%

CRUSTACEANS



INLAND MUNICIPAL FISHERIES BY GROUP



FISH

**Volume of
Production**
(in metric tons)

547.16



MOLLUSCS

Growth Rate
(4th Quarter 2024/
4th Quarter 2023)

3.42%



CRUSTACEANS

-10.02%

11.9%

12.83%

Note: P-preliminary

Source:
<https://openstat.psa.gov.ph>



Mail us at:
isabela@psa.gov.ph



Contact us at:
(075) 323-0718



Visit us at:
2nd Floor, LSP Bldg.,
Alibagu City of Ilagan, Isabela