

# SPECIAL RELEASE

## REGISTERED DEATHS IN BATANES, JANUARY TO DECEMBER 2024 (Preliminary Result)

Date of Release: 26 February 2025

Reference No. SR2025-012



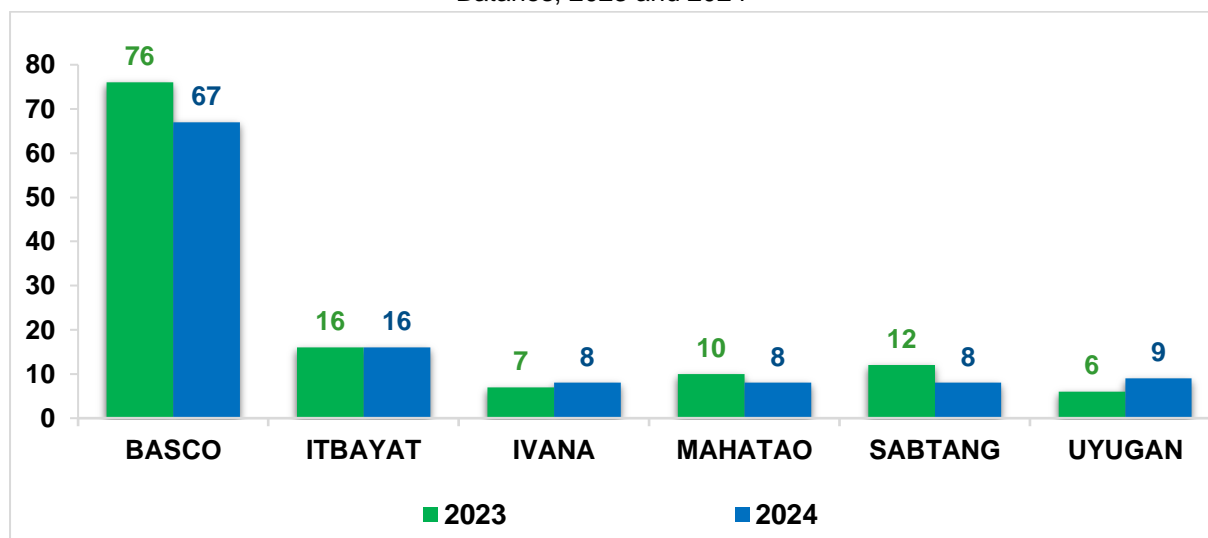
### DEATH STATISTICS

#### Basco had the highest number of registered deaths

The total number of registered deaths in the province of Batanes in 2024 was 116 deaths. This was a decrease of 11 deaths compared to the 127 registered deaths in 2023. Among the six municipalities in the province, Basco recorded the highest number of registered deaths with 67 deaths, accounting 57.8 percent of the total deaths in 2024. Meanwhile, the municipalities of Ivana, Mahatao and Sabtang had the lowest number of registered deaths with only eight deaths or 6.9 percent each.

In terms of changes, the municipality of Uyugan recorded the highest increase in registered deaths, with nine deaths in 2024 compared to six deaths in 2023. On the other hand, Basco posted the highest decrease in registered deaths, with a reduction of nine deaths from 76 deaths in 2023 to 67 deaths in 2024. (Figure 1 and Table 1)

Figure 1. Number of Registered Deaths by Municipality:  
 Batanes, 2023 and 2024 <sup>p</sup>



Source: Philippine Statistics Authority, Decentralized Vital Statistics System (DVSS) and Vital Events Information (VEI) System

Note: Figures are results of actual registration without any adjustment for under-registration.  
<sup>p</sup> Preliminary results as of January 2025

Table 1. Number of Registered Deaths by Municipality: Batanes, 2023 and 2024 <sup>p</sup>

Province and Municipality	2023	2024	Number of Change
<b>BATANES</b>	<b>127</b>	<b>116</b>	<b>-11</b>
Basco	76	67	-9
Itbayat	16	16	0
Ivana	7	8	1
Mahatao	10	8	-2
Sabtang	12	8	-4
Uyugan	6	9	3

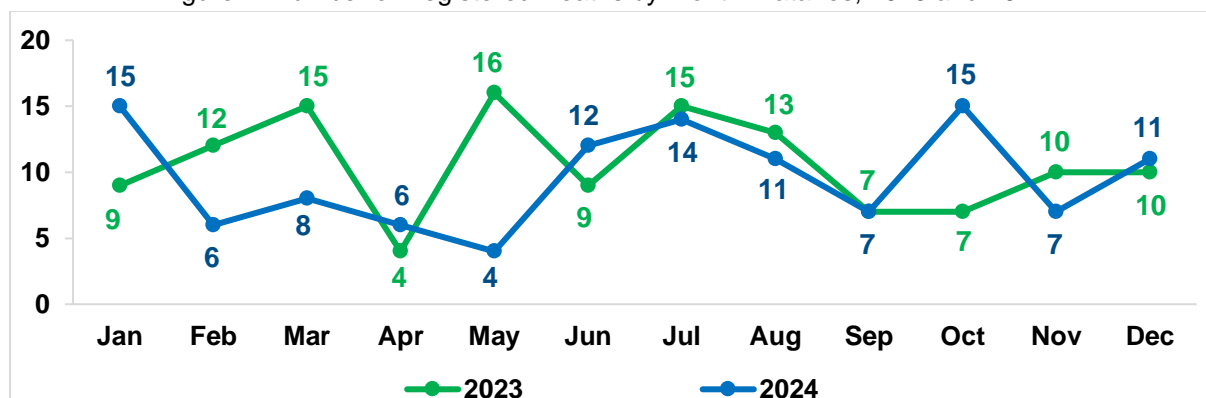
Source: Philippine Statistics Authority, Decentralized Vital Statistics System (DVSS) and Vital Events Information (VEI) System

Note: Figures are results of actual registration without any adjustment for under-registration.

<sup>p</sup> Preliminary results as of January 2025

### Most deaths were registered in January and October

Most deaths in 2024 were registered in the months of January and October with 15 deaths or 12.9 percent for both months. On the other hand, the month of May recorded the lowest number of deaths, with four deaths or 3.4 percent. In 2023, most deaths were registered in the month of May with 16 deaths, while the lowest recorded deaths were in April with four deaths. (Figure 2 and Table 2)

Figure 2. Number of Registered Deaths by Month: Batanes, 2023 and 2024 <sup>p</sup>

Source: Philippine Statistics Authority, Decentralized Vital Statistics System (DVSS) and Vital Events Information (VEI) System

Note: Figures are results of actual registration without any adjustment for under-registration.

<sup>p</sup> Preliminary results as of January 2025

Table 2. Number and Percentage Distribution of Registered Deaths by Month: Batanes, 2023 and 2024<sup>p</sup>

Month of Occurrence	2023		2024	
	Number	Percent	Number	Percent
<b>TOTAL</b>	<b>127</b>	<b>100.0</b>	<b>116</b>	<b>100.0</b>
January	9	7.1	15	12.9
February	12	9.4	6	5.2
March	15	11.8	8	6.9
April	4	3.1	6	5.2
May	16	12.6	4	3.4
June	9	7.1	12	10.3
July	15	11.8	14	12.1
August	13	10.2	11	9.5
September	7	5.5	7	6.0
October	7	5.5	15	12.9
November	10	7.9	7	6.0
December	10	7.9	11	9.5

Source: Philippine Statistics Authority, Decentralized Vital Statistics System (DVSS) and Vital Events Information (VEI) System

Note: Figures are results of actual registration without any adjustment for under-registration.

Total percent may not add up to 100 due to rounding off.

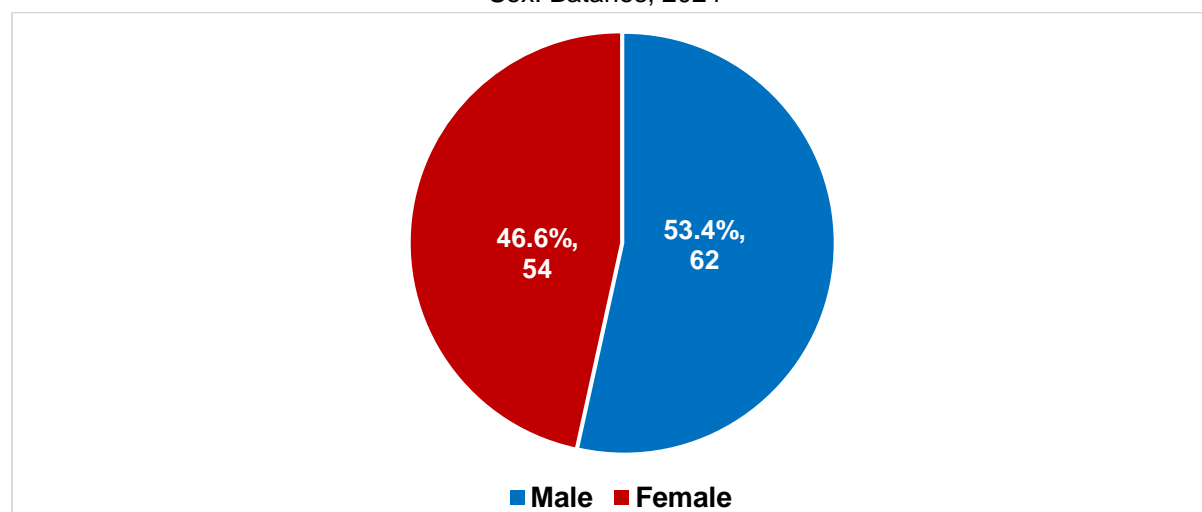
<sup>p</sup> Preliminary results as of January 2025

## More males died than females

Out of the 116 registered deaths in 2024, more than half (53.4%) were males or 62 deaths compared to 54 female deaths or 46.6 percent.

By place of occurrence, the municipality of Basco recorded the highest number of deaths, with 67 deaths or 57.8 percent of the total. This included 35 male deaths or 30.2 percent and 32 female deaths or 27.6 percent. Meanwhile, the lowest number of male deaths was recorded in Ivana and Sabtang with three deaths or 2.6 percent each while the lowest number of female deaths was recorded in Mahatao with three deaths or 2.6 percent. (Figure 3 and Table 3)

Figure 3. Number and Percentage Distribution of Registered Deaths by Place of Occurrence and by Sex: Batanes, 2024 <sup>p</sup>



Source: Philippine Statistics Authority, Vital Events Information (VEI) System

Note: Figures are results of actual registration without any adjustment for under-registration.

<sup>p</sup> Preliminary results as of January 2025

Table 3. Number and Percentage Distribution of Registered Deaths by Place of Occurrence and by Sex: Batanes, 2024 <sup>p</sup>

Province and Municipality	Place of Occurrence					
	Both Sexes		Male		Female	
	Number	Percent	Number	Percent	Number	Percent
<b>BATANES</b>	<b>116</b>	<b>100.0</b>	<b>62</b>	<b>53.4</b>	<b>54</b>	<b>46.6</b>
Basco	67	57.8	35	30.2	32	27.6
Itbayat	16	13.8	12	10.3	4	3.5
Ivana	8	6.9	3	2.6	5	4.3
Mahatao	8	6.9	5	4.3	3	2.6
Sabtang	8	6.9	3	2.6	5	4.3
Uyugan	9	7.8	4	3.5	5	4.3

Source: Philippine Statistics Authority, Vital Events Information (VEI) System

Note: Figures are results of actual registration without any adjustment for under-registration.

Total percent may not add up to 100 due to rounding off.

<sup>p</sup> Preliminary results as of January 2025

In terms of place of usual residence, Basco recorded the highest number of deaths, with 45 deaths or 38.8 percent. These were divided into 20 male deaths or 17.2 percent and 25 female deaths or 21.6 percent. Ivana had registered the least number of deaths, with 11 deaths or 9.5 percent, which composed of five male deaths or 4.3 percent and six female deaths or 5.2 percent. Deaths of individuals residing outside the province were also recorded with two male deaths, which represented 1.7 percent, with no recorded deaths among females. (Table 4)

Table 4. Number and Percentage Distribution of Registered Deaths by Place of Usual Residence and by Sex: Batanes, 2024<sup>p</sup>

Province and Municipality	Place of Usual Residence					
	Both Sexes		Male		Female	
	Number	Percent	Number	Percent	Number	Percent
<b>TOTAL</b>	<b>116</b>	<b>100.0</b>	<b>62</b>	<b>53.4</b>	<b>54</b>	<b>46.6</b>
<b>BATANES</b>	<b>114</b>	<b>98.3</b>	<b>60</b>	<b>51.7</b>	<b>54</b>	<b>46.6</b>
Basco	45	38.8	20	17.2	25	21.6
Itbayat	17	14.7	13	11.2	4	3.5
Ivana	11	9.5	5	4.3	6	5.2
Mahatao	15	12.9	9	7.8	6	5.2
Sabtang	13	11.2	6	5.2	7	6.0
Uyugan	13	11.2	7	6.0	6	5.2
<b>OTHER PROVINCES</b>	<b>2</b>	<b>1.7</b>	<b>2</b>	<b>1.7</b>	<b>0</b>	<b>0.0</b>

Source: Philippine Statistics Authority, Vital Events Information (VEI) System

Note: Figures are results of actual registration without any adjustment for under-registration.

Total percent may not add up to 100 due to rounding off.

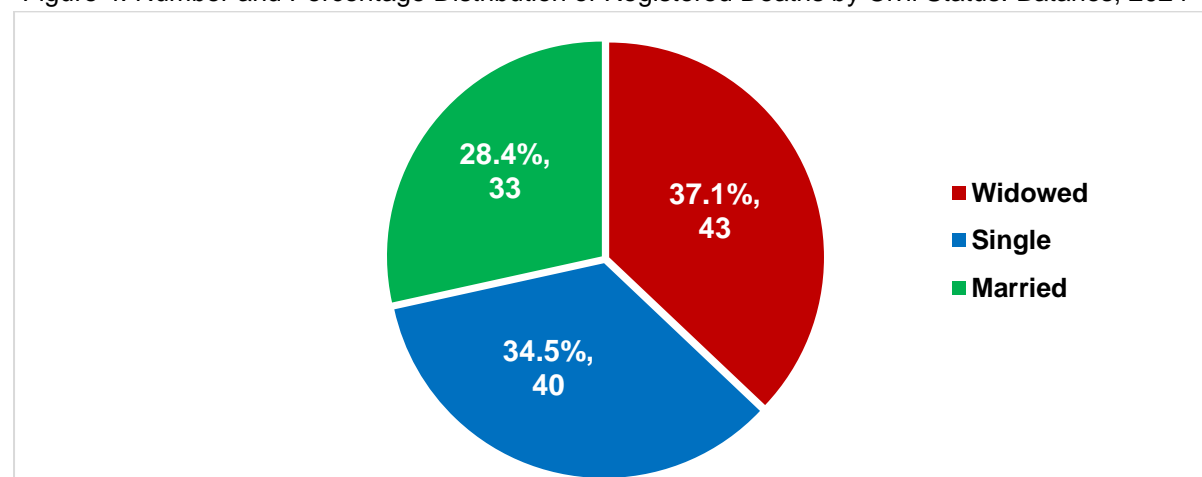
<sup>p</sup> Preliminary results as of January 2025

### Most registered deaths were among widowed individuals

By civil status, the highest proportion of deaths were recorded for widowed individuals, with 43 deaths or 37.1 percent, followed by single individuals with 40 deaths or 34.5 percent. Married individuals had the least, with 33 deaths or 28.4 percent.

By place of occurrence, the municipality of Basco recorded the highest number of deaths across all civil status categories, with 26 single deaths or 65.0 percent, 16 married deaths or 48.5 percent, and 25 widowed deaths or 58.1 percent. (Figure 4 and Table 5)

Figure 4. Number and Percentage Distribution of Registered Deaths by Civil Status: Batanes, 2024<sup>p</sup>



Source: Philippine Statistics Authority, Vital Events Information (VEI) System

Note: Figures are results of actual registration without any adjustment for under-registration.

Total percent may not add up to 100 due to rounding off.

<sup>p</sup> Preliminary results as of January 2025

Table 5. Number and Percentage Distribution of Registered Deaths by Place of Occurrence and by Civil Status: Batanes, 2024 <sup>p</sup>

Province and Municipality	Place of Occurrence					
	Single		Married		Widowed	
	Number	Percent	Number	Percent	Number	Percent
<b>BATANES</b>	<b>40</b>	<b>100.0</b>	<b>33</b>	<b>100.0</b>	<b>43</b>	<b>100.0</b>
Basco	26	65.0	16	48.5	25	58.1
Itbayat	7	17.5	4	12.1	5	11.6
Ivana	0	0.0	4	12.1	4	9.3
Mahatao	3	7.5	3	9.1	2	4.7
Sabtang	2	5.0	3	9.1	3	7.0
Uyugan	2	5.0	3	9.1	4	9.3

Source: Philippine Statistics Authority, Vital Events Information (VEI) System

Note: Figures are results of actual registration without any adjustment for under-registration.

<sup>p</sup> Preliminary results as of January 2025

In terms of place of usual residence, Basco also recorded the highest number of deaths with 21 widowed deaths or 48.8 percent, 14 single deaths or 35.0 percent, and 10 married deaths or 30.3 percent. Meanwhile, there were two deaths recorded under individuals residing outside the province who were both single. (Table 6)

Table 6. Number and Percentage Distribution of Registered Deaths by Place of Usual Residence and by Civil Status: Batanes, 2024 <sup>p</sup>

Province and Municipality	Place of Usual Residence					
	Single		Married		Widowed	
	Number	Percent	Number	Percent	Number	Percent
<b>TOTAL</b>	<b>40</b>	<b>100.0</b>	<b>33</b>	<b>100.0</b>	<b>43</b>	<b>100.0</b>
<b>BATANES</b>	<b>38</b>	<b>95.0</b>	<b>33</b>	<b>100.0</b>	<b>43</b>	<b>100.0</b>
Basco	14	35.0	10	30.3	21	48.8
Itbayat	8	20.0	4	12.1	5	11.6
Ivana	0	0.0	6	18.2	5	11.6
Mahatao	8	20.0	3	9.1	4	9.3
Sabtang	4	10.0	6	18.2	3	7.0
Uyugan	4	10.0	4	12.1	5	11.6
<b>OTHER PROVINCE</b>	<b>2</b>	<b>5.0</b>	<b>0</b>	<b>0.0</b>	<b>0</b>	<b>0.0</b>

Source: Philippine Statistics Authority, Vital Events Information (VEI) System

Note: Figures are results of actual registration without any adjustment for under-registration.

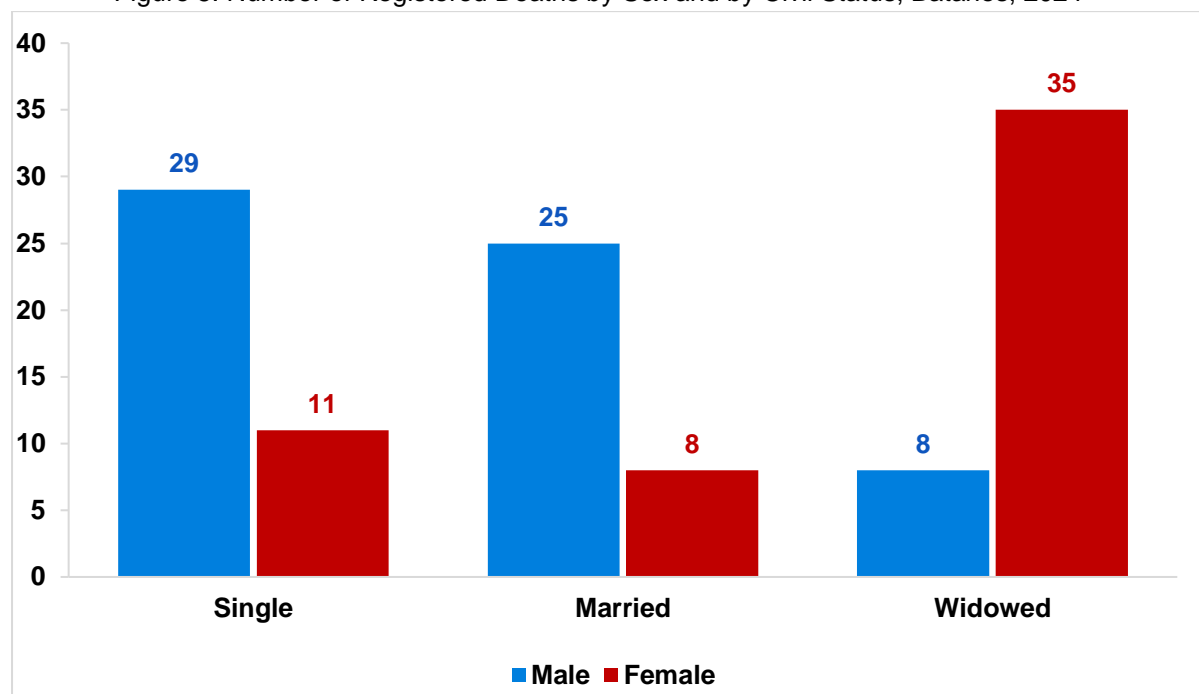
Total percent may not add up to 100 due to rounding off.

<sup>p</sup> Preliminary results as of January 2025

## Most males who died were single while widowed for females

In 2024, most male deaths were among single individuals, with 29 deaths or 25.0 percent of the total male deaths, while the least were among widowed individuals, with eight deaths or 6.9 percent. On the other hand, most female deaths occurred among widowed individuals, with 35 deaths or 30.2 percent of the total female deaths, while the least were among married individuals, with eight deaths or 6.9 percent. (Figure 5 and Table 7)

Figure 5: Number of Registered Deaths by Sex and by Civil Status, Batanes, 2024 <sup>p</sup>



Source: Philippine Statistics Authority, Vital Events Information (VEI) System

Note: Figures are results of actual registration without any adjustment for under-registration.

<sup>p</sup> Preliminary results as of January 2025

Table 7. Number and Percentage Distribution of Registered Deaths by Sex and by Civil Status: Batanes, 2024 <sup>p</sup>

Civil Status	Both Sexes		Male		Female	
	Number	Percent	Number	Percent	Number	Percent
<b>TOTAL</b>	<b>116</b>	<b>100.0</b>	<b>62</b>	<b>53.5</b>	<b>54</b>	<b>46.6</b>
Single	40	34.5	29	25.0	11	9.5
Married	33	28.5	25	21.6	8	6.9
Widowed	43	37.1	8	6.9	35	30.2

Source: Philippine Statistics Authority, Vital Events Information (VEI) System

Note: Figures are results of actual registration without any adjustment for under-registration.

Total percent may not add up to 100 due to rounding off.

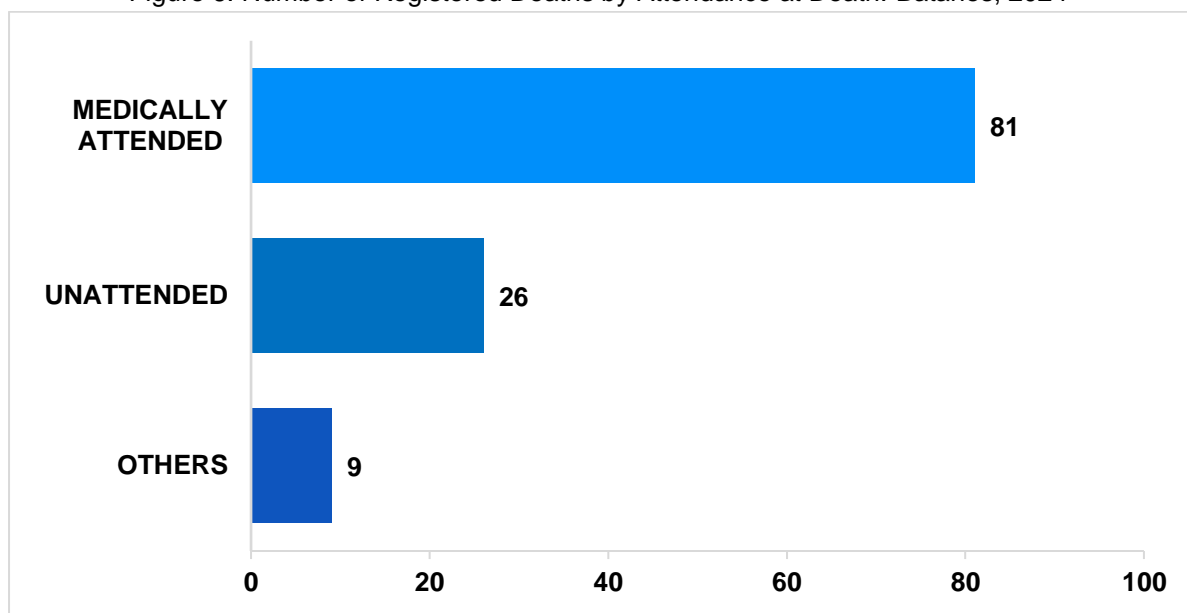
<sup>p</sup> Preliminary results as of January 2025

## Four-fifths of the registered deaths were medically attended

Medically attended deaths are those attended by a physician, public health officer, hospital authority or other medically inclined personnel.

Out of the 116 registered deaths in 2024, 81 deaths or 69.8 percent were medically attended. On the other hand, 26 deaths or 22.4 percent were unattended, while the remaining nine deaths or 7.8 percent were attended by others, such as relatives. Basco recorded the highest number of registered deaths, with 53 deaths or 45.7 percent being medically attended and 14 deaths or 12.1 percent being unattended. (Figure 6 and Table 8)

Figure 6. Number of Registered Deaths by Attendance at Death: Batanes, 2024<sup>p</sup>



Source: Philippine Statistics Authority, Vital Events Information (VEI) System

Note: Figures are results of actual registration without any adjustment for under-registration.

<sup>p</sup> Preliminary results

Table 8. Number and Percentage Distribution of Registered Deaths by Place of Occurrence and by Attendance at Death: Batanes, 2024<sup>p</sup>

Province and Municipality	Place of Occurrence							
	TOTAL		Medically Attended		Unattended		Others	
	Number	Percent	Number	Percent	Number	Percent	Number	Percent
<b>BATANES</b>	<b>116</b>	<b>100.0</b>	<b>81</b>	<b>69.8</b>	<b>26</b>	<b>22.4</b>	<b>9</b>	<b>7.8</b>
Basco	67	57.8	53	45.7	14	12.1	0	0.0
Itbayat	16	13.9	14	12.1	1	0.9	1	0.9
Ivana	8	6.9	4	3.4	1	0.9	3	2.6
Mahatao	8	6.9	0	0.0	7	6.0	1	0.9
Sabtang	8	6.9	3	2.6	2	1.7	3	2.6
Uyugan	9	7.8	7	6.0	1	0.9	1	0.9

Source: Philippine Statistics Authority, Vital Events Information (VEI) System

Note: Figures are results of actual registration without any adjustment for under-registration.

Total percent may not add up to 100 due to rounding off.

<sup>p</sup> Preliminary results as of January 2025

In terms of place of usual residence, Basco had the highest number of registered deaths with 45 deaths or 38.8 percent. Among these, 31 deaths or 26.7 percent were medically attended, while 14 or 12.1 percent were unattended. Meanwhile, Ivana recorded the least number of registered deaths with 11 deaths or 9.5 percent of the total, which were distributed into seven medically attended deaths or 6.0 percent, one unattended death or 0.9 percent, and three deaths or 2.6 percent attended by others, such as relatives. (Table 9)

Table 9. Number and Percentage Distribution of Registered Deaths by Place of Usual Residence and by Attendance at Death: Batanes, 2024<sup>p</sup>

Province and Municipality	Place of Usual Residence							
	TOTAL		Medically Attended		Unattended		Others	
	Number	Percent	Number	Percent	Number	Percent	Number	Percent
<b>TOTAL</b>	<b>116</b>	<b>100.0</b>	<b>81</b>	<b>69.8</b>	<b>26</b>	<b>22.4</b>	<b>9</b>	<b>7.8</b>
<b>BATANES</b>	<b>114</b>	<b>98.3</b>	<b>79</b>	<b>68.1</b>	<b>26</b>	<b>22.4</b>	<b>9</b>	<b>7.8</b>
Basco	45	38.8	31	26.7	14	12.1	0	0.0
Itbayat	17	14.7	15	12.9	1	0.9	1	0.9
Ivana	11	9.5	7	6.0	1	0.9	3	2.6
Mahatao	15	12.9	7	6.0	7	6.0	1	0.9
Sabtang	13	11.2	8	6.9	2	1.7	3	2.6
Uyugan	13	11.3	11	9.5	1	0.9	1	0.9
<b>OTHER PROVINCE</b>	<b>2</b>	<b>1.7</b>	<b>2</b>	<b>1.7</b>	<b>0</b>	<b>0.0</b>	<b>0</b>	<b>0.0</b>

Source: Philippine Statistics Authority, Vital Events Information (VEI) System

Note: Figures are results of actual registration without any adjustment for under-registration.

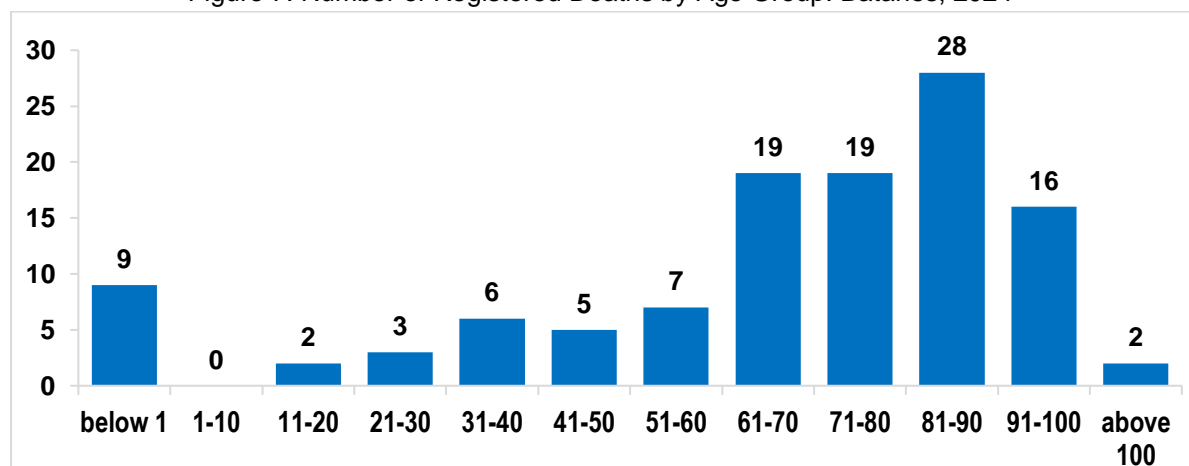
Total percent may not add up to 100 due to rounding off.

<sup>p</sup> Preliminary results as of January 2025

### Most registered deaths were aged 81 to 90 years old

In 2024, the highest number of registered deaths in the province of Batanes was observed in the age group 81 to 90 years old, with 28 deaths or 24.1 percent of the total. This was followed by the age groups 61 to 70 years old and 71 to 80 years old, each recorded 19 deaths or 16.4 percent. On the other hand, the age group above 100 years old registered the least number of deaths, with two deaths or 1.7 percent. No deaths were recorded in the age group one to 10 years old but there were nine deaths recorded among babies below one year old. (Figure 7 and Table 10)

Figure 7. Number of Registered Deaths by Age Group: Batanes, 2024<sup>p</sup>



Source: Philippine Statistics Authority, Vital Events Information (VEI) System

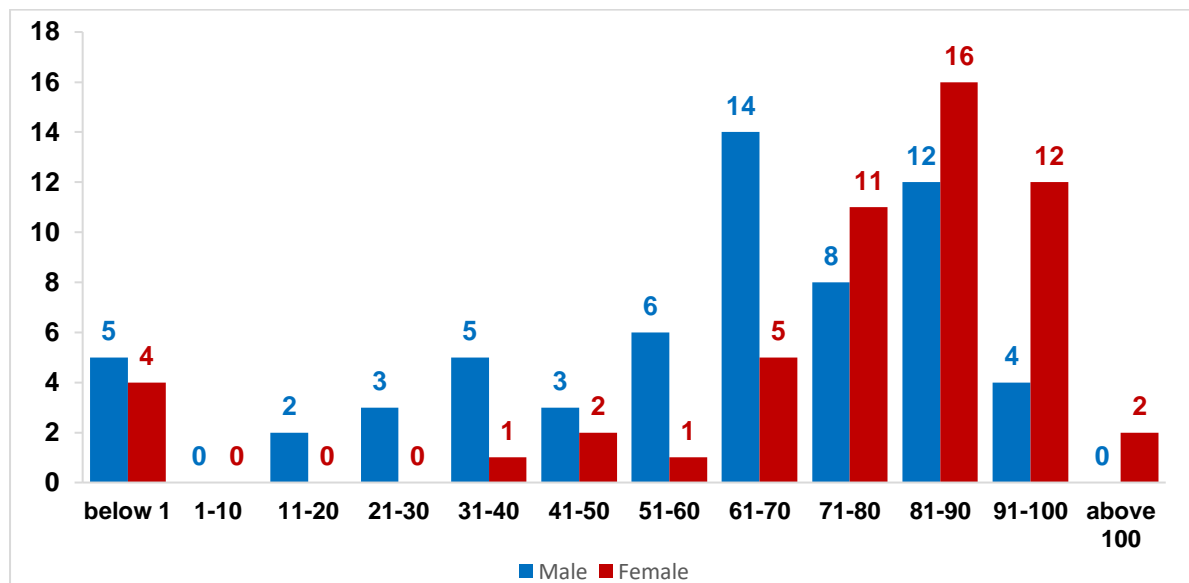
Note: Figures are results of actual registration without any adjustment for under-registration.

<sup>p</sup> Preliminary results as of January 2025

Among the 62 male deaths, the age group 61 to 70 years old recorded the highest number of deaths, with 14 deaths or 22.6 percent. For females, the age group 81 to 90 years old registered the highest number of deaths, with 16 deaths or 29.6 percent.

The oldest male deaths were in the age group 91 to 100 years old, with four deaths or 6.5 percent, while the youngest male deaths were below one year old, accounting for five deaths or 8.1 percent. For females, the oldest death was above 100 years old, with two deaths or 3.7 percent, while the youngest female deaths were below one year old with four deaths or 7.4 percent. (Figure 8 and Table 10)

Figure 8. Number of Registered Deaths by Age Group and by Sex:  
Batanes, 2024<sup>p</sup>



Source: Philippine Statistics Authority, Vital Events Information (VEI) System

Note: Figures are results of actual registration without any adjustment for under-registration.

<sup>p</sup> Preliminary results as of January 2025

Table 10. Number and Percentage Distribution of Registered Deaths by Age Group and by Sex:  
Batanes, 2024<sup>p</sup>

Age Group	Both Sexes		Male		Female	
	Number	Percent	Number	Percent	Number	Percent
<b>TOTAL</b>	<b>116</b>	<b>100.0</b>	<b>62</b>	<b>100.0</b>	<b>54</b>	<b>100.0</b>
below 1	9	7.8	5	8.1	4	7.4
1-10	0	0.0	0	0.0	0	0.0
11-20	2	1.7	2	3.2	0	0.0
21-30	3	2.6	3	4.8	0	0.0
31-40	6	5.2	5	8.1	1	1.9
41-50	5	4.3	3	4.8	2	3.7
51-60	7	6.0	6	9.7	1	1.9
61-70	19	16.4	14	22.6	5	9.3
71-80	19	16.4	8	12.9	11	20.4
81-90	28	24.1	12	19.4	16	29.6
91-100	16	13.8	4	6.5	12	22.2
above 100	2	1.7	0	0.0	2	3.7

Source: Philippine Statistics Authority, Vital Events Information (VEI) System

Note: Figures are results of actual registration without any adjustment for under-registration.

Total percent may not add up to 100 due to rounding off.

<sup>p</sup> Preliminary results as of January 2025

---

## EXPLANATORY NOTES

**Vital Statistics** are derived from information obtained at the time when the occurrences of vital events and their characteristics are inscribed in a civil register.

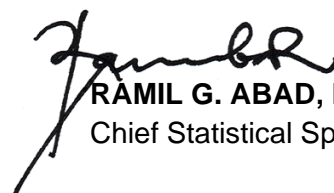
The data on vital statistics presented in this release were obtained from The Certificates of Death (Municipal Form 103) that were registered, either timely or delayed, at the Office of the Municipal Civil Registrars and subsequently submitted for encoding to the Office of the Civil Registrar General through the Provincial Statistical Offices (PSOs) of the Philippine Statistics Authority (PSA). The information presented includes provisional vital events that occurred from January 2024 to December 2024 based on data files received by the PSA – Batanes Provincial Statistical Office. Thus, the figures presented herein are still preliminary and may differ from the final count.

## DEFINITION OF TERMS AND CONCEPTS

**Death** refers to the permanent disappearance of all evidence of life at any time after births has taken place (postnatal cessation of vital function without capability of resuscitation).

**Place of Occurrence** refers to the place where the vital event took place.

---

  
**RAMIL G. ABAD, MBA, MPopS**  
Chief Statistical Specialist