

# SPECIAL RELEASE

## REGISTERED DEATHS IN BATANES, JANUARY TO JUNE 2024 (Preliminary Result)

Date of Release: 27 January 2025

Reference No. SR2025-004



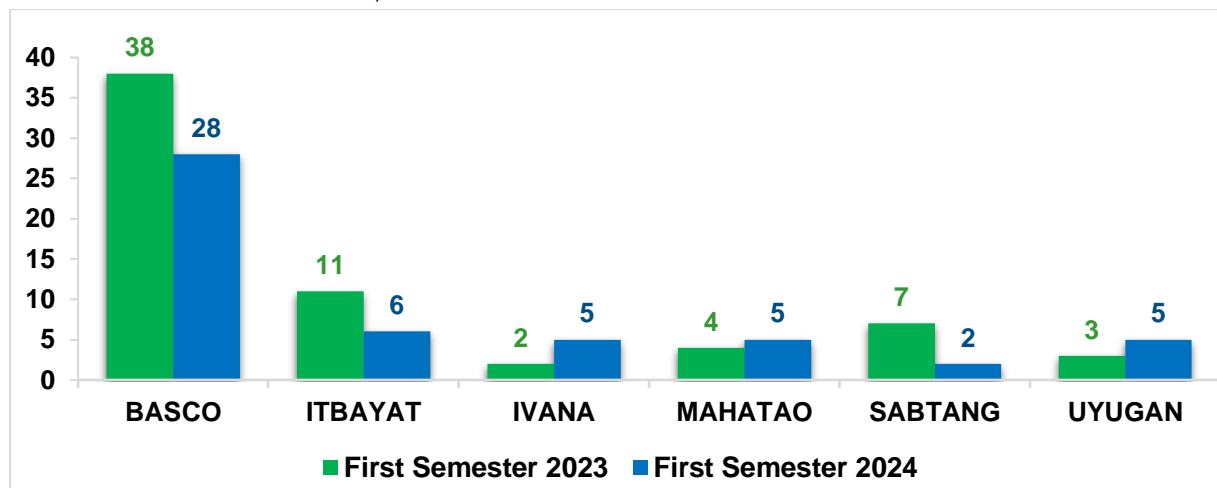
### DEATH STATISTICS

#### Basco had the highest number of registered deaths

The total number of registered deaths in the province of Batanes during the first semester of 2024 was 51 deaths, which was lower by 14 deaths compared to the 65 registered deaths in the first semester of 2023. Among the six municipalities in the province, Basco recorded the highest number of registered deaths with 28 deaths, accounting for more than one-half or 54.9 percent of the total deaths in the first semester of 2024. Meanwhile, the municipality of Sabtang had the lowest number of registered deaths, with only two deaths or 3.9 percent.

In terms of changes, the municipality of Ivana recorded the highest increase in registered deaths, with five deaths in the first semester of 2024 compared to two deaths in the first semester of 2023. On the other hand, Basco posted the highest decrease in registered deaths, with a reduction of 10 deaths from 38 deaths in the first semester of 2023 to 28 deaths in the first semester of 2024. (Figure 1 and Table 1)

Figure 1. Number of Registered Deaths by Municipality:  
Batanes, First Semester 2023 and First Semester 2024 <sup>p</sup>



Source: Philippine Statistics Authority, Decentralized Vital Statistics System (DVSS) and Vital Events Information (VEI) System

Note: Figures are results of actual registration without any adjustment for under-registration.  
<sup>p</sup> Preliminary results as of July 2024

Table 1. Number of Registered Deaths by Municipality:  
Batanes, First Semester 2023 and First Semester 2024<sup>p</sup>

Province and Municipality	First Semester 2023	First Semester 2024	Number of Change
<b>BATANES</b>	<b>65</b>	<b>51</b>	<b>-14</b>
Basco	38	28	-10
Itbayat	11	6	-5
Ivana	2	5	3
Mahatao	4	5	1
Sabtang	7	2	-5
Uyugan	3	5	2

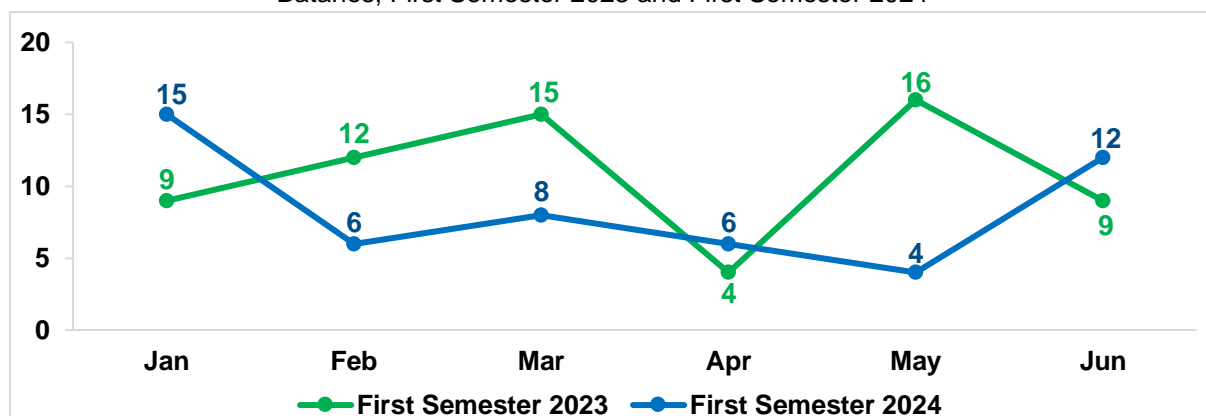
Source: Philippine Statistics Authority, Decentralized Vital Statistics System (DVSS) and Vital Events Information (VEI) System

Note: Figures are results of actual registration without any adjustment for under-registration.  
p Preliminary results as of July 2024

### Most deaths were registered in January

Most deaths in the first semester of 2024 were registered in the month of January with 15 deaths or 29.4 percent. On the other hand, the month of May ranked at the bottom with four deaths or 7.8 percent. However, in the first semester of 2023, most deaths were registered in the month May with 16 deaths while least recorded deaths were registered in the month of April with only four deaths. (Figure 2 and Table 2)

Figure 2. Number of Registered Deaths by Month:  
Batanes, First Semester 2023 and First Semester 2024<sup>p</sup>



Source: Philippine Statistics Authority, Decentralized Vital Statistics System (DVSS) and Vital Events Information (VEI) System

Note: Figures are results of actual registration without any adjustment for under-registration.  
p Preliminary results as of July 2024

Table 2. Number and Percentage Distribution of Registered Deaths by Month:  
Batanes, First Semester 2023 and First Semester 2024<sup>p</sup>

Month of Occurrence	First Semester 2023		First Semester 2024	
	Number	Percent	Number	Percent
<b>TOTAL</b>	<b>65</b>	<b>100.0</b>	<b>51</b>	<b>100.0</b>
January	9	13.8	15	29.4
February	12	18.5	6	11.8
March	15	23.1	8	15.7
April	4	6.2	6	11.8
May	16	24.6	4	7.8
June	9	13.8	12	23.5

Source: Philippine Statistics Authority, Decentralized Vital Statistics System (DVSS) and Vital Events Information (VEI) System

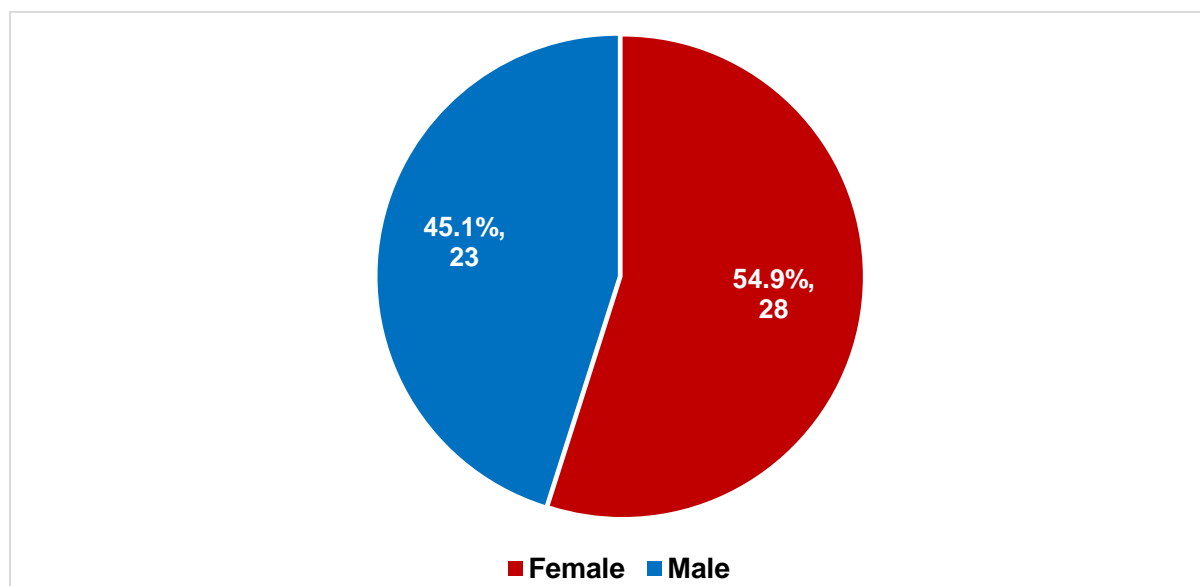
Note: Figures are results of actual registration without any adjustment for under-registration.  
p Preliminary results as of July 2024

## More females died than males

Out of the 51 registered deaths in the first semester of 2024, more than half were females, with 28 deaths or 54.9 percent, compared to 23 male deaths or 45.1 percent.

By place of occurrence, the municipality of Basco recorded the highest number of deaths, with 28 deaths or 54.9 percent of the total. This included an equal number of male and female deaths, with 14 deaths or 27.5 percent each. Sabtang had the lowest number of deaths with two, which represented 3.9 percent, all of which were female. (Figure 3 and Table 3)

Figure 3. Number and Percentage Distribution of Registered Deaths by Place of Occurrence and by Sex: Batanes, First Semester 2024<sup>p</sup>



Source: Philippine Statistics Authority, Vital Events Information (VEI) System

Note: Figures are results of actual registration without any adjustment for under-registration.

<sup>p</sup> Preliminary results as of July 2024

Table 3. Number and Percentage Distribution of Registered Deaths by Place of Occurrence and by Sex: Batanes, First Semester 2024<sup>p</sup>

Province and Municipality	Place of Occurrence					
	Both Sexes		Male		Female	
	Number	Percent	Number	Percent	Number	Percent
<b>BATANES</b>	<b>51</b>	<b>100.0</b>	<b>23</b>	<b>45.1</b>	<b>28</b>	<b>54.9</b>
Basco	28	54.9	14	27.5	14	27.5
Itbayat	6	11.8	5	9.8	1	2.0
Ivana	5	9.8	1	2.0	4	7.8
Mahatao	5	9.8	3	5.9	2	3.9
Sabtang	2	3.9	0	0.0	2	3.9
Uyugan	5	9.8	0	0.0	5	9.8

Source: Philippine Statistics Authority, Vital Events Information (VEI) System

Note: Figures are results of actual registration without any adjustment for under-registration.

Total percent may not add up to 100 due to rounding off.

<sup>p</sup> Preliminary results as of July 2024

In terms of place of usual residence, Basco also accounted the highest number of deaths, with 20 deaths or 39.2 percent. These were divided into seven male deaths or 13.7 percent and 13 female deaths or 25.5 percent. Sabtang had registered the least number of deaths, with three deaths or 5.9 percent, which composed of one male death or 2.0 percent and two female deaths or 3.9 percent. Uyugan had five deaths, which accounted for 9.8 percent, all of which were female. Deaths of individuals residing outside the province were accounted for two male deaths, which represented 3.9 percent, with no recorded deaths among females. (Table 4)

Table 4. Number and Percentage Distribution of Registered Deaths by Place of Usual Residence and by Sex: Batanes, First Semester 2024 <sup>p</sup>

Province and Municipality	Place of Usual Residence					
	Both Sexes		Male		Female	
	Number	Percent	Number	Percent	Number	Percent
<b>TOTAL</b>	<b>51</b>	<b>100.0</b>	<b>23</b>	<b>45.1</b>	<b>28</b>	<b>54.9</b>
<b>BATANES</b>	<b>49</b>	<b>96.1</b>	<b>21</b>	<b>41.2</b>	<b>28</b>	<b>54.9</b>
Basco	20	39.2	7	13.7	13	25.5
Itbayat	7	13.7	6	11.8	1	2.0
Ivana	6	11.8	2	3.9	4	7.8
Mahatao	8	15.7	5	9.8	3	5.9
Sabtang	3	5.9	1	2.0	2	3.9
Uyugan	5	9.8	0	0.0	5	9.8
<b>OTHER PROVINCE</b>	<b>2</b>	<b>3.9</b>	<b>2</b>	<b>3.9</b>	<b>0</b>	<b>0.0</b>

Source: Philippine Statistics Authority, Vital Events Information (VEI) System

Note: Figures are results of actual registration without any adjustment for under-registration.

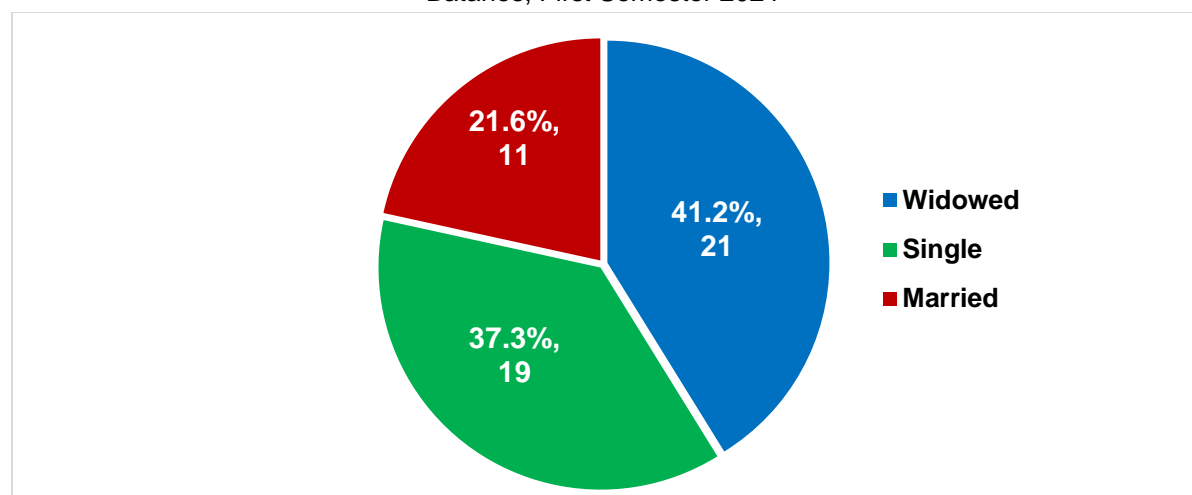
<sup>p</sup> Preliminary results as of July 2024

### Most registered deaths were widowed individuals

In the first semester of 2024, widowed individuals accounted the largest proportion of deaths, with 21 deaths or 41.2 percent of the total. Single individuals followed with 19 deaths or 37.3 percent, while married individuals had the least, with 11 deaths or 21.6 percent.

By place of occurrence, the municipality of Basco recorded the highest number of deaths across all civil status categories, with 11 widowed deaths or 52.4 percent, 11 single deaths or 57.9 percent, and 6 married deaths 54.6 percent. (Figure 4 and Table 5)

Figure 4. Number and Percentage Distribution of Registered Deaths by Civil Status: Batanes, First Semester 2024 <sup>p</sup>



Source: Philippine Statistics Authority, Vital Events Information (VEI) System

Note: Figures are results of actual registration without any adjustment for under-registration.

<sup>p</sup> Preliminary results as of July 2024

Table 5. Number and Percentage Distribution of Registered Deaths by Place of Occurrence and by Civil Status: Batanes, First Semester 2024<sup>p</sup>

Province and Municipality	Place of Occurrence					
	Single		Married		Widowed	
	Number	Percent	Number	Percent	Number	Percent
<b>BATANES</b>	<b>19</b>	<b>100.0</b>	<b>11</b>	<b>100.0</b>	<b>21</b>	<b>100.0</b>
Basco	11	57.9	6	54.6	11	52.4
Itbayat	4	21.1	1	9.1	1	4.8
Ivana	0	0.0	1	9.1	4	19.1
Mahatao	2	10.5	2	18.2	1	4.8
Sabtang	2	10.5	0	0.0	0	0.0
Uyugan	0	0.0	1	9.1	4	19.1

Source: Philippine Statistics Authority, Vital Events Information (VEI) System

Note: Figures are results of actual registration without any adjustment for under-registration.

Total percent may not add up to 100 due to rounding off.

<sup>p</sup> Preliminary results as of July 2024

In terms of place of usual residence, Basco also recorded the highest number of deaths, with 10 widowed deaths or 47.6 percent, six single deaths or 31.6 percent, and four married deaths or 36.4 percent. Deaths of individuals residing outside the province recorded two single deaths or 10.5 percent of the total deaths under single category while with no recorded deaths among married or widowed individuals. (Table 6)

Table 6. Number and Percentage Distribution of Registered Deaths by Place of Usual Residence and by Civil Status: Batanes, First Semester 2024<sup>p</sup>

Province and Municipality	Place of Usual Residence					
	Single		Married		Widowed	
	Number	Percent	Number	Percent	Number	Percent
<b>TOTAL</b>	<b>19</b>	<b>100.0</b>	<b>11</b>	<b>100.0</b>	<b>21</b>	<b>100.0</b>
<b>BATANES</b>	<b>17</b>	<b>89.5</b>	<b>11</b>	<b>100.0</b>	<b>21</b>	<b>100.0</b>
Basco	6	31.6	4	36.4	10	47.6
Itbayat	5	26.3	1	9.1	1	4.8
Ivana	0	0.0	2	18.2	4	19.1
Mahatao	4	21.1	2	18.2	2	9.5
Sabtang	2	10.5	1	9.1	0	0.0
Uyugan	0	0.0	1	9.1	4	19.1
<b>OTHER PROVINCE</b>	<b>2</b>	<b>10.5</b>	<b>0</b>	<b>0.0</b>	<b>0</b>	<b>0.0</b>

Source: Philippine Statistics Authority, Vital Events Information (VEI) System

Note: Figures are results of actual registration without any adjustment for under-registration.

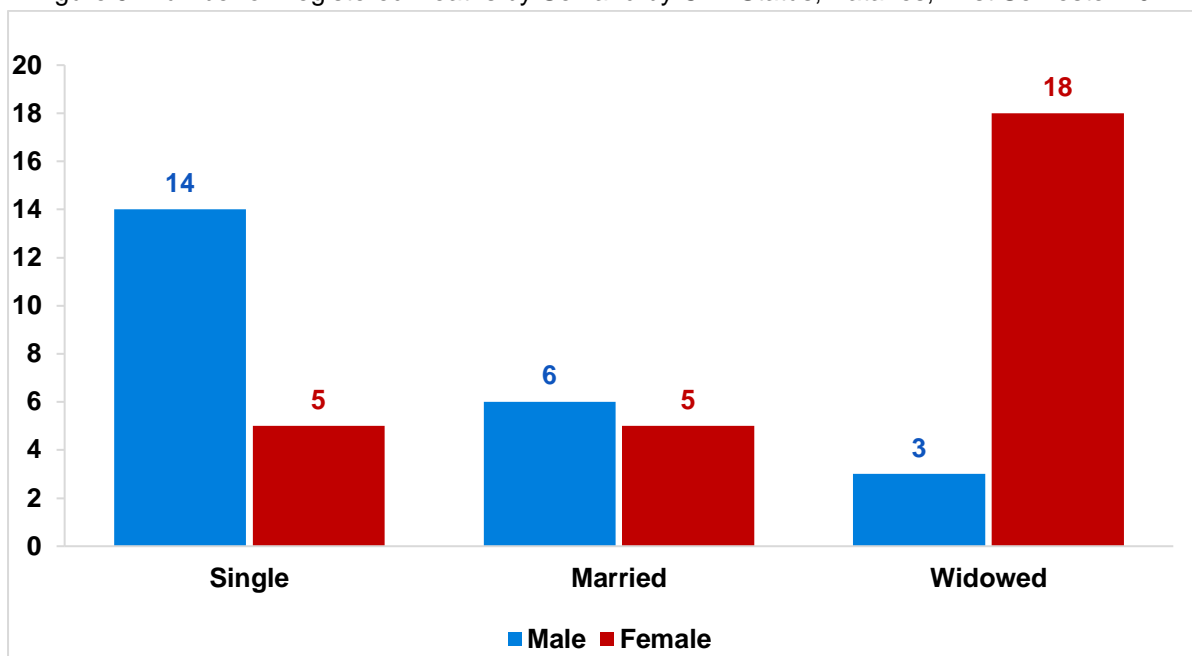
Total percent may not add up to 100 due to rounding off.

<sup>p</sup> Preliminary results as of July 2024

### Most Registered Deaths were among Widowed Females

In the first semester of 2024, widowed individuals accounted the largest proportion of registered deaths in Batanes, with 21 deaths or 41.2 percent. Most registered deaths were widowed female, with 18 deaths or 35.3 percent. Single individuals followed, with 19 deaths or 37.3 percent, of which 14 deaths or 27.5 percent were male, and five deaths or 9.8 percent were female. Married individuals had the least number of deaths, with 11 deaths or 21.6 percent. Among them were six male deaths or 11.8 percent and five female deaths or 9.8 percent. (Figure 5 and Table 7)

Figure 5: Number of Registered Deaths by Sex and by Civil Status, Batanes, First Semester 2024 <sup>p</sup>



Source: Philippine Statistics Authority, Vital Events Information (VEI) System

Note: Figures are results of actual registration without any adjustment for under-registration.

<sup>p</sup> Preliminary results as of July 2024

Table 7. Number and Percentage Distribution of Registered Deaths by Sex and by Civil Status: Batanes, First Semester 2024 <sup>p</sup>

Civil Status	Both Sexes		Male		Female	
	Number	Percent	Number	Percent	Number	Percent
<b>TOTAL</b>	<b>51</b>	<b>100.0</b>	<b>23</b>	<b>45.1</b>	<b>28</b>	<b>54.9</b>
Single	19	37.3	14	27.5	5	9.8
Married	11	21.6	6	11.8	5	9.8
Widowed	21	41.2	3	5.9	18	35.3

Source: Philippine Statistics Authority, Vital Events Information (VEI) System

Note: Figures are results of actual registration without any adjustment for under-registration.

Total percent may not add up to 100 due to rounding off.

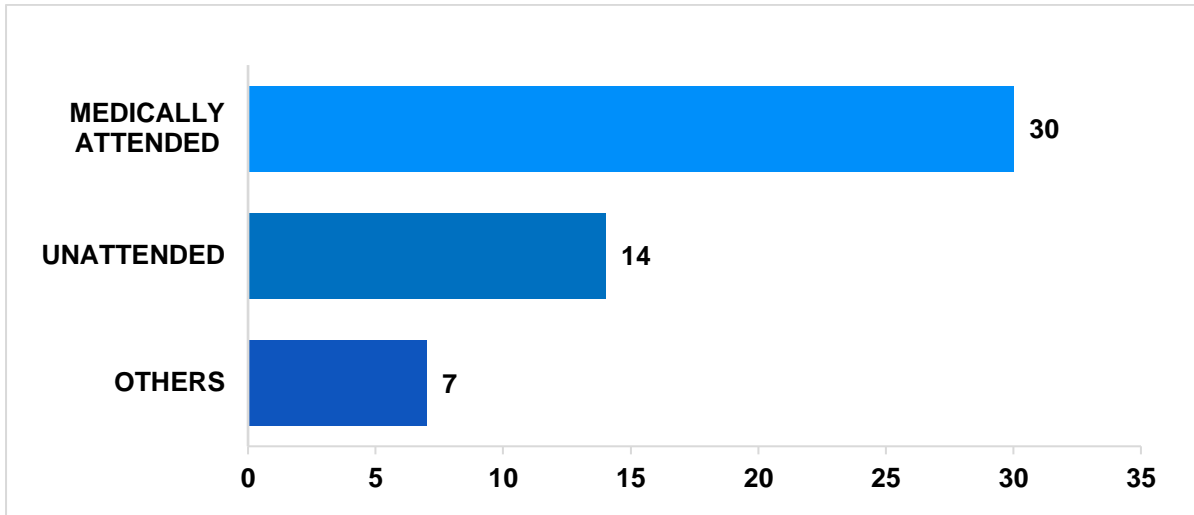
<sup>p</sup> Preliminary results as of July 2024

### Four-fifths of the registered deaths were medically attended

Medically attended deaths are those attended by a physician, public health officer, hospital authority or other medically inclined personnel.

Out of the 51 registered deaths in the first semester of 2024, 30 deaths or 58.8 percent were medically attended reflecting the effectiveness of medical services in the province. On the other hand, 14 deaths or 27.5 percent were unattended while the remaining seven deaths or 13.7 percent were attended by others, such as relatives. (Figure 6 and Table 8)

Figure 6. Number of Registered Deaths by Attendance at Death: Batanes, First Semester 2024<sup>p</sup>



Source: Philippine Statistics Authority, Vital Events Information (VEI) System

Note: Figures are results of actual registration without any adjustment for under-registration.

<sup>p</sup> Preliminary results

Table 8. Number and Percentage Distribution of Registered Deaths by Attendance at Death: Batanes, First Semester 2024<sup>p</sup>

Province	Medically Attended		Unattended		Others	
	Number	Percent	Number	Percent	Number	Percent
<b>BATANES</b>	<b>30</b>	<b>58.8</b>	<b>14</b>	<b>27.5</b>	<b>7</b>	<b>13.7</b>

Source: Philippine Statistics Authority, Vital Events Information (VEI) System

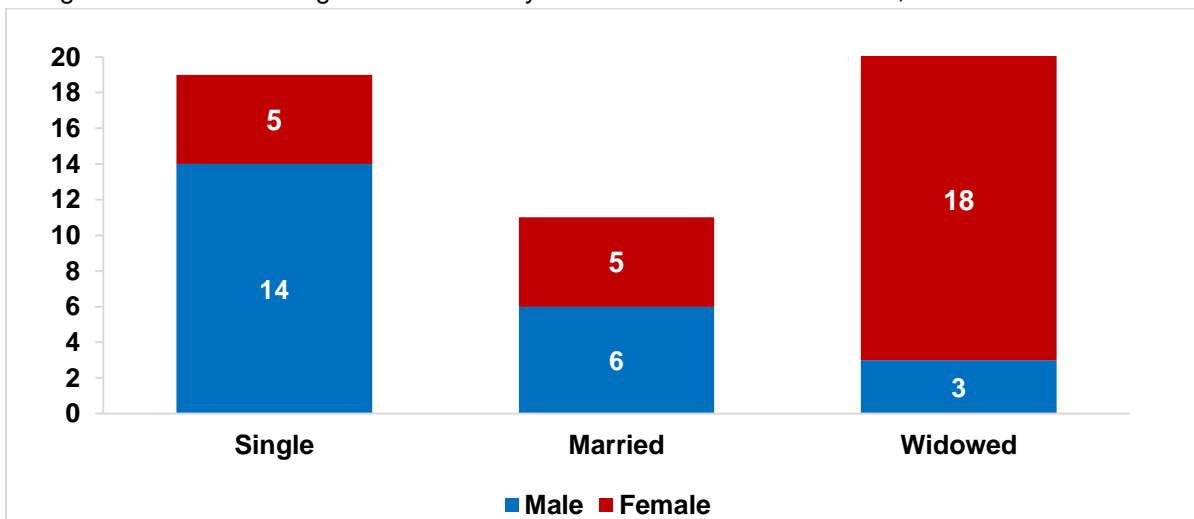
Note: Figures are results of actual registration without any adjustment for under-registration.

<sup>p</sup> Preliminary results as of July 2024

### Most males who died were single while widowed for females

In the first semester of 2024, most male deaths were among single individuals with 14 deaths or 60.9 percent of the total male deaths. On the other hand, most female deaths occurred among widowed individuals, with 18 deaths or 64.3 percent of the total female deaths. (Figure 7 and Table 9).

Figure 7. Number of Registered Deaths by Civil Status and Sex: Batanes, First Semester 2024<sup>p</sup>



Source: Philippine Statistics Authority, Vital Events Information (VEI) System

Note: Figures are results of actual registration without any adjustment for under-registration.

<sup>p</sup> Preliminary results as of July 2024

Table 9. Number and Percentage Distribution of Registered Deaths by Sex and by Civil Status: Batanes, First Semester 2024 <sup>p</sup>

Civil Status	Male		Female	
	Number	Percent	Number	Percent
<b>TOTAL</b>	<b>23</b>	<b>100.0</b>	<b>28</b>	<b>100.0</b>
Single	14	60.9	5	17.9
Married	6	26.1	5	17.9
Widowed	3	13.0	18	64.3

Source: Philippine Statistics Authority, Vital Events Information (VEI) System

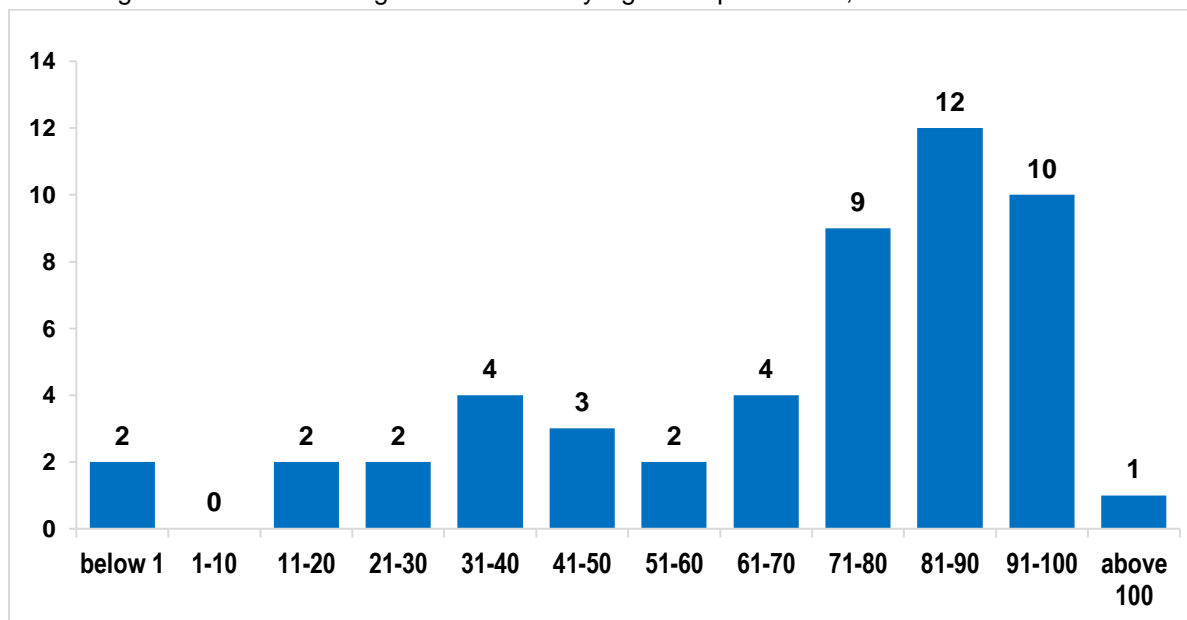
Note: Figures are results of actual registration without any adjustment for under-registration.

<sup>p</sup> Preliminary results as of July 2024

### Most registered deaths were aged 81 to 90 years old

In the first semester of 2024, the highest number of registered deaths in the province of Batanes was observed in the age group 81 to 90 years old, with 12 deaths or 23.5 percent of the total. This was followed by the age group 91 to 100 years old, which recorded 10 deaths or 19.6 percent. On the other hand, the age group above 100 years old registered the least number of deaths with one death or 2.0 percent. No deaths were recorded in the age group one to 10 years old, indicating relatively low mortality among younger age groups during this period. (Figure 8 and Table 10).

Figure 8. Number of Registered Deaths by Age Group: Batanes, First Semester 2024 <sup>p</sup>



Source: Philippine Statistics Authority, Vital Events Information (VEI) System

Note: Figures are results of actual registration without any adjustment for under-registration.

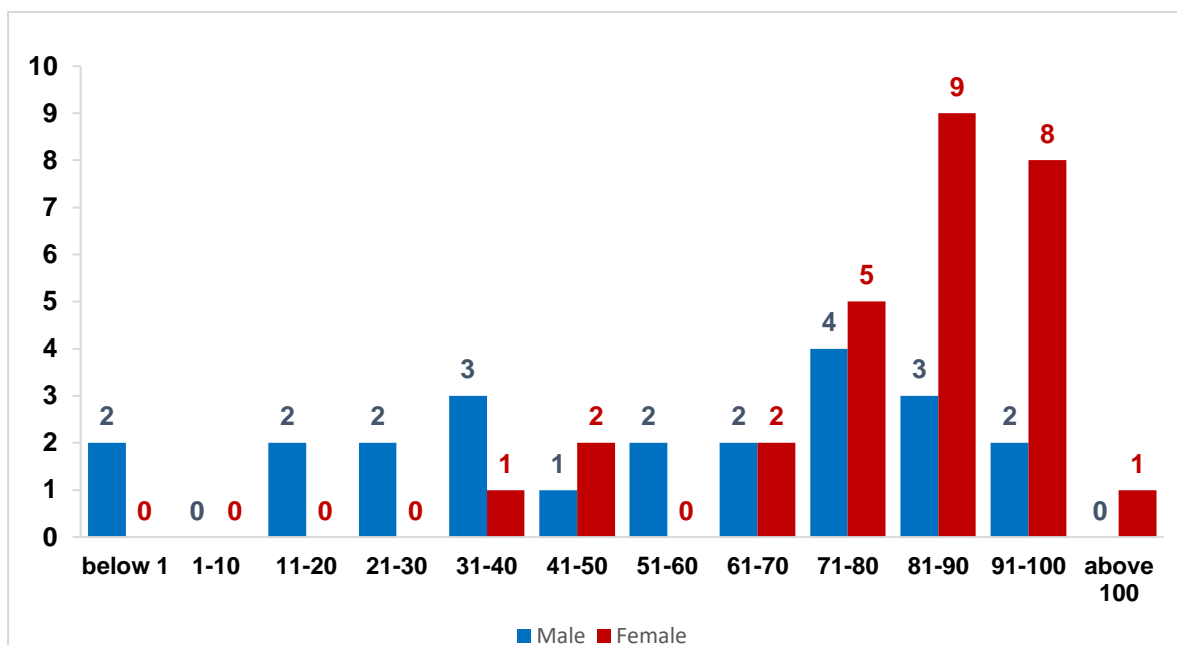
<sup>p</sup> Preliminary results as of July 2024

Among the 23 male deaths, the age group 71 to 80 years old recorded the highest number of deaths, with four deaths or 17.4 percent. For females, the age group 81 to 90 years old registered the highest number of deaths, with nine deaths or 32.1 percent.

The oldest male death was recorded in the age group 91 to 100 years old, while the youngest male deaths were below one year old. For females, the oldest death was above 100 years old, and the youngest deaths were in the age group 31 to 40 years old. (Figure 9 and Table 10).



Figure 9. Number of Registered Deaths by Age Group and by Sex:  
Batanes, First Semester 2024 <sup>p</sup>



Source: Philippine Statistics Authority, Vital Events Information (VEI) System

Note: Figures are results of actual registration without any adjustment for under-registration.

<sup>p</sup> Preliminary results as of July 2024

Table 10. Number and Percentage Distribution of Registered Deaths by Age Group and by Sex:  
Batanes, First Semester 2024 <sup>p</sup>

Age Group	Both Sexes		Male		Female	
	Number	Percent	Number	Percent	Number	Percent
<b>TOTAL</b>	<b>51</b>	<b>100.0</b>	<b>23</b>	<b>100.0</b>	<b>28</b>	<b>100.0</b>
below 1	2	3.9	2	8.7	0	0.0
1-10	0	0.0	0	0.0	0	0.0
11-20	2	3.9	2	8.7	0	0.0
21-30	2	3.9	2	8.7	0	0.0
31-40	4	7.8	3	13.0	1	3.6
41-50	3	5.9	1	4.4	2	7.1
51-60	2	3.9	2	8.7	0	0.0
61-70	4	7.8	2	8.7	2	7.1
71-80	9	17.7	4	17.4	5	17.9
81-90	12	23.5	3	13.0	9	32.1
91-100	10	19.6	2	8.7	8	28.6
above 100	1	2.0	0	0.0	1	3.6

Source: Philippine Statistics Authority, Vital Events Information (VEI) System

Note: Figures are results of actual registration without any adjustment for under-registration.

Total percent may not add up to 100 due to rounding off.

<sup>p</sup> Preliminary results as of July 2024

---

## EXPLANATORY NOTES

**Vital Statistics** are derived from information obtained at the time when the occurrences of vital events and their characteristics are inscribed in a civil register.

The data on vital statistics presented in this release were obtained from The Certificates of Death (Municipal Form 103) that were registered, either timely or delayed, at the Office of the Municipal Civil Registrars and subsequently submitted for encoding to the Office of the Civil Registrar General through the Provincial Statistical Offices (PSOs) of the Philippine Statistics Authority (PSA). The information presented includes provisional vital events that occurred from January 2024 to June 2024 based on data files received by the PSA – Batanes Provincial Statistical Office. Thus, the figures presented herein are still preliminary and may differ from the final count.

### DEFINITION OF TERMS AND CONCEPTS

**Death** refers to the permanent disappearance of all evidence of life at any time after births has taken place (postnatal cessation of vital function without capability of resuscitation).

**Place of Occurrence** refers to the place where the vital event took place.

---



**FAMIL G. ABAD, MBA, MPopS**  
Chief Statistical Specialist

